

Indoor | Surface/Suspended | Output up to 1170lm

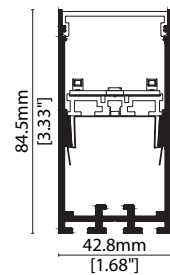


Key applications

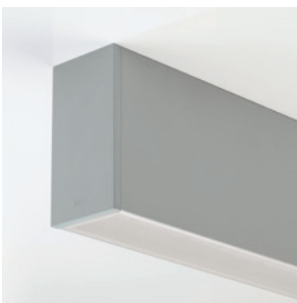
- ✓ Ceiling
- ✓ Office lighting
- ✓ Downlighting
- ✓ Wall grazing
- ✓ Interior

Key features

- ✓ Control Gear
- ✓ Extensive CCT range
- ✓ Custom lengths
- ✓ High lumen efficacy
- ✓ Decorative
- ✓ IP40
- ✓ Diffusion: Homogenous
- ✓ Lensed
- ✓ Direct view



MOUNTING METHODS



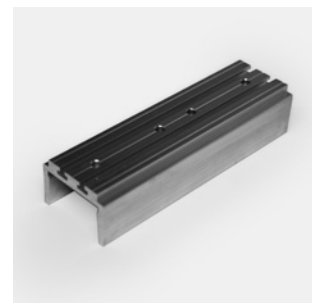
Surface mounting via screws



KKSW-07 Suspension mounting kit



KKSW-08 Ceiling rose



KKJT-03 Joining bar

KOH 40-S High CRI

Specification sheet

KKDC



Dimensions	H84.5/W42.8/L580-1700mm (H3.33/W1.68/L22.83-66.93in)
PCB Cut-point	560/1120/1680mm (22.05/44.09/66.14in)
LED Pitch	-
Chip	k-line
Cover/Optics	Diffused (130°) / Dark Louvre (60°)
CCT	k-line : 1900K/2100K/2300K/2500K/2700K/3000K/3500K/4000K/5000K
LED binning	k-line : 3-step MacAdam Ellipse
CRI	≥ 90
Lifetime	50,000 hours @ 25°C (50,000 hours @ 77°F)
Operating temp	T _a = -20 to 45°C (T _c max = 62.9°C) T _a = -4 to 113°F (T _c max = 145.2°F)
IP Rating	IP40
Finish	Matt Silver/Grey/White/Black/Bronze Powder Coated
Mounting	Surface mounting via screw fixing, suspended via suspension kit
Power feed	Male/female connectors
Control	0-10V/DALI (Integrated Power Supply)



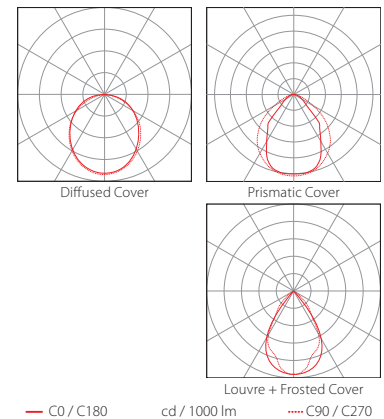
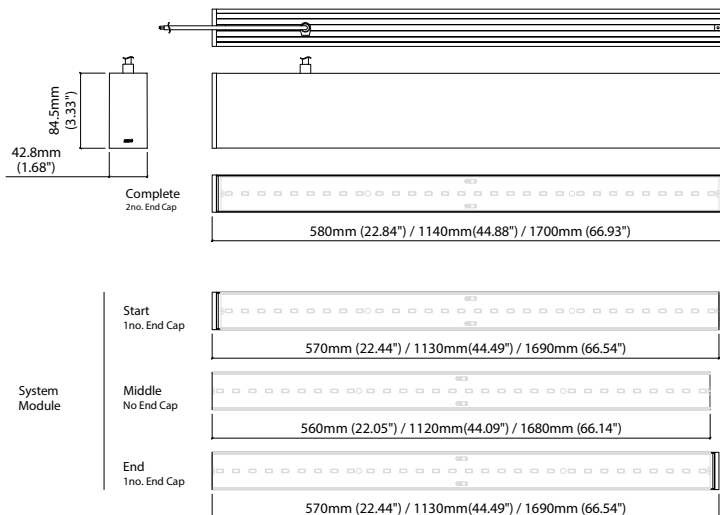
LED Grading Key

Base Grade

k-line
3-step commercial range
Energy Star CCTs

Power consumption	Supply voltage	Supply current	Power factor:
17.5W	240V AC 50Hz	0.08A	0.925 @ 239.99V, 50Hz

	Diffused Cover	Prismatic Cover	Louvre + Frosted Cover	CRI	R9	Rf	Rg
k-line	990lm 56.8lm/W	1170lm 66.9lm/W	480lm 29lm/W	93	66	92	99



Data derived from independent UKAS/IESNA LM-79-08 accredited testing of production samples.

KOH 40-S High CRI

Code Table



FIXTURE

Model	Finish	Cover	Grade	LED Type ¹	Colour (CCT)	Length Availability ²	Lens	Module Type*	Control Type	Input													
KOH 40-S	GA	Matt White Paint	MW	Louvre	T	k	k	High CRI	630A	1900K	19	580mm	m	0580	Frosted lens	FL	Complete	FE	0-10V	4	AC 100V	b	
		Matt Silver Paint	MS	Diffused	C					2100K	21	1140mm	m	1140			Start	LE	DALI	3	AC 220-240V	d	
		Matt Grey Paint	MG	Prismatic	G					2300K	23	1700mm	m	1700			Middle	XE	No Controller	5	No PSU	l	
		Matt Black Paint	MB							2500K	25	22.05in	i	0022			End	RE					
		Bronze Paint	BP							2700K	27	44.09in	i	0044									
										3000K	30	66.14in	i	0066									
										3500K	35												
										4000K	40												
										5000K	50												

¹ Refer to **LED Grading Key** on **Specification sheet** page

² Refer to **Length Availability List** or enter total run length instead of length code

* Module Type (various fixture lengths)

Complete	FE	
Start	LE	
Middle	XE	
End	RE	

Code Example:

GA	-	MW	-	C	-	k	-	630A	-	30	-	m	-	1140	-	FL	-	FE	-	4	-	d
KOH 40-S		Matt White Paint		Diffused		k		High CRI		3000K		m		1140mm		Frosted lens		Complete		0-10V		AC 220-240V

ACCESSORIES

Mounting Accessories

KKJT-03	Joining Bar
KKSW-07	Suspension Mounting Kit
KKSW-08	Ceiling Rose

Connection Accessories

KKCN-26	Power Feed Cable
KKCN-31	Power Feed Cable (Non-Fabric)

* Refer to **Power feed** on **Accessories** pages

PSU/Driver

0-10V/DALI (Integrated Power Supply)

* Refer to **Mounting accessories** on **Accessories** pages

Colour	LED	Lumen/module	Wattage	Spec Doc	Length
Single CCT	630A	1170/module	17.5	KOH 40-S High CRI	560/1120/1680mm (22.05/44.10/66.14in)
	957A	2190/module	33.5	KOH 40-S High Power	560/1120/1680mm (22.05/44.10/66.14in)

* Performance data: k-line, Prismatic Cover, 3000K, 580mm module

KOH 40-S High CRI

Length Availability List

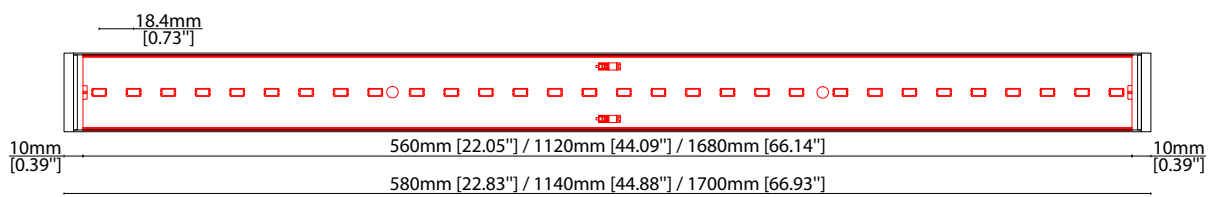


Length Code		Fixture Length ¹		LED Strip ²		End Cap Dimension ³		Wattage (W)	Output (lm)
Metric	Imperial(US)	Metric	Imperial(US)	Metric	Imperial(US)	Metric	Imperial(US)		3000K (Test Data)
m0580	i0023	580mm	22.83in	560mm	22.05in	10mm	0.39in	17.50	1171
m1140	i0045	1140mm	44.88in	1120mm	44.09in	10mm	0.39in	35.00	2342
m1700	i0067	1700mm	66.93in	1680mm	66.14in	10mm	0.39in	52.50	3512

¹ Actual total overall length of light fixture (LED strip + end caps + void/wire hole)

² Actual length of PCB strip

³ Actual length of 2x end caps



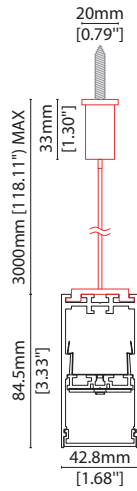
MOUNTING ACCESSORIES

Note: Accessories are to be ordered separately with corresponding code shown below.



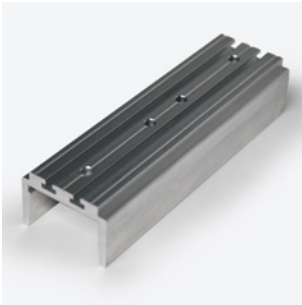
KKS-07

Suspension mounting kit
(allow 2 per metre/40in)
Aluminium finish
L20/W20/H3000mm
(L0.79/W0.79/H118.11")



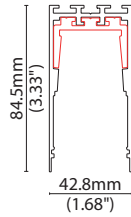
KKS-08

Ceiling rose
Dia 127mm (5") x H 6.35mm (0.25")
Maximum weight 20kg per/kit



KKJT-03

Joining bar
(allow 1 per join)
L120/W38.3/H26.3mm
(L4.72/W1.50/H1.03")



POWER CABLE



KKN-26

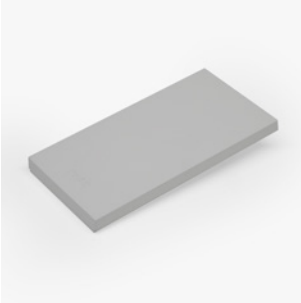
Power Feed Cable



KKN-31

Power Feed Cable (Non-Fabric)

END CAPS AND LIGHT LEAK TAPE



- KKEC-S1 (2no.) - End cap pair (Mat white)
- KKEC-S2 (2no.) - End cap pair (Mat silver)
- KKEC-S3 (2no.) - End cap pair (Mat gray)
- KKEC-S4 (2no.) - End cap pair (Mat black)
- KKEC-S5 (2no.) - End cap pair (Bronze)



Black tape (prevents light leak)